

Ops Update

For all Michigan Medicine Faculty, Staff and Learners

Monday, May 17, 2021, 12:40 p.m.

Please share this information with your teams and front line staff, especially those who may not access emails or computers.

NEW TODAY: Here's the latest information about Michigan Medicine's management of operations:

- **COVID-19 PATIENT STATS**
- **TEAM MEMBER COVID-19 TESTING**
- **VACCINE DISTRIBUTION STATISTICS**

- **MASKING GUIDELINES**

- **MEDICAL SCHOOL COMMENCEMENT**
- **HIT PAUSE: HOPE, INSPIRATION, GRATITUDE**

DAILY COVID-19 PATIENT STATS

Today's census for COVID-19 inpatients and those patients under investigation (PUI) are noted below:

	TOTAL INPATIENTS	TESTED POSITIVE	PUI	ICU POSITIVE
ADULT	42	42	0	18
PEDIATRIC	7	6	1	2

Statistics are updated here:

<https://uhabccappspr1.umhs.med.umich.edu:9223/>

COVID-19 Patient Percent Positivity (7 day moving average), as of 5/14

Symptomatic testing 7.6 %

Asymptomatic testing: 1.82 %

Discharges: 2,572 total COVID-19 discharges to date, 3 in the last 24 hours. These numbers include patients discharged to skilled nursing facilities but excludes deaths and discharges to hospice.

TEAM MEMBER COVID-19 TESTING STATS*

POSITIVE	1,933
EMPLOYEES TESTED	14,997
TOTAL TESTS	29,810

* Data from 3/5/2020 through 5/16/2021

Employees Positive Cases preceding week (5/2 – 5/8/21)	43
Employee Positive Cases Last 7 Days	20
Employees Tested Last 7 Days	183
Positivity Rate (Week of 5/9–5/15/21)	10.92%

Testing stats reflect just Michigan Medicine employees, not all University of Michigan employees. It also reflects only those who sought testing at or were hospitalized at Michigan Medicine or reported their testing to Occupational Health Services. Some Michigan Medicine employees may have been tested outside our system.

VACCINE DISTRIBUTION STATISTICS

[Updated here.](#)

OUTDOOR MASKING GUIDELINES

Based on outdoor masking guidance on the U-M campus, masks are not required when outdoors at Michigan Medicine when social distancing of six feet or more can be maintained. While it has been determined there is minimal risk for vaccinated individuals, we still must continue to remain cautious and follow these additional guidelines:

- Outdoor gatherings are still not permitted.
- Those with a compromised immune system should continue to mask even if vaccinated and discuss with their medical provider.
- Masking is still required in the courtyard but may be removed when eating at a distance of at least six feet from others.
- Masks should still be worn in high traffic areas where social distancing is difficult such as bus stops and building entrances.
- **Masks are still required at all times in any Michigan Medicine buildings.**

Please encourage your teams to comply with these requirements and help keep our communities safe. For further information, review [Frequently Asked Questions](#) about outdoor masking guidelines. Or check out this recently [published article](#) on our Michigan Health blog, “Confused About the Latest Mask Rules? Read This.”

CLASS OF 2021 CELEBRATION

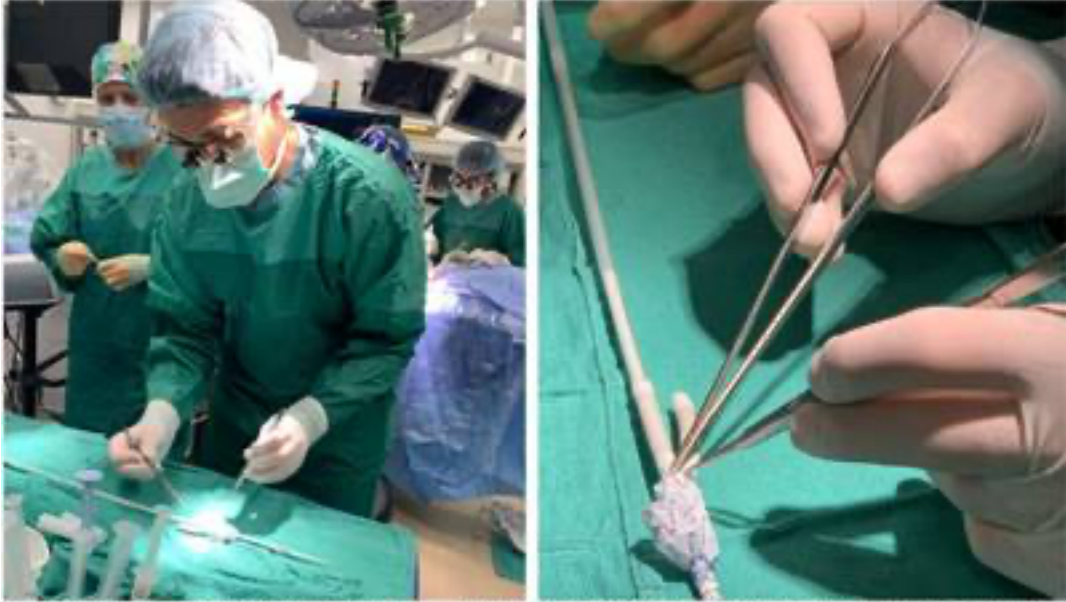
Get the details and enjoy photos from Friday’s virtual U-M Medical School Commencement ceremony in [today’s Headlines story](#).

HIT PAUSE: HOPE, INSPIRATION, GRATITUDE

In this spot, we will share stories of hope, inspiration and gratitude. Take a few minutes to pause and reflect:

“Monster” Aneurysm Calls for Unprecedented Emergency Procedure:

A highly complex emergency endovascular procedure was one man’s only hope of survival when others deemed his condition inoperable. Read more in our [Michigan Health blog](#).



Osborne creates rare customized thoracoabdominal endograft during an emergency surgery to repair patient's life-threatening aortic aneurysm. Credit: Michigan Medicine Department of Vascular Surgery

Weekly bulletins and policies are posted on Michigan Medicine Headlines at <https://mmheadlines.org/covid-19-updates/>. Please bookmark this site and refer to it for the most up-to-date information.